

Mar 2014 | No.320

今日家居®

INNOVATION IN LIFE · STYLE

7 TODAY'S LIVING



Cover Story 時尚變革

From Paris with Love

Special Supplement

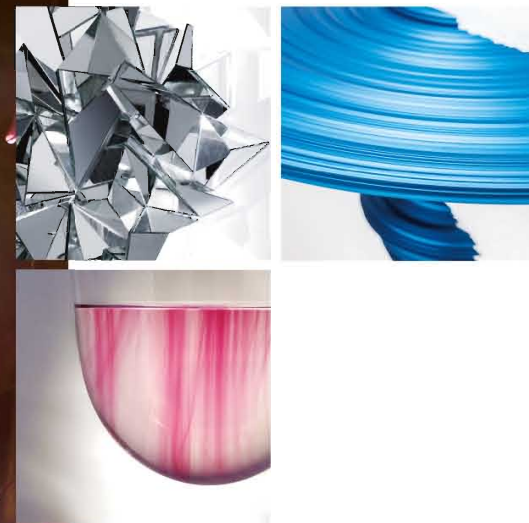
Special Supplement
擁抱戶外空間 The Great Outdoors

Living Plus 來自南歐的魅力



HK \$35 \$35
A Bilingual / Bilingual Interiors Month
9 771018 578003

DESIGN | special report



Design Miami 2013

Text by Ling Lam

去年12月，美國深受雪災影響。逾32,000名收藏家和設計愛好者不僅因為較溫和的天氣而齊集邁阿密的海灘，更是為了出席美國其中一個大型設計展 Design Miami 2013，見證來自世界各地的藝術機構及畫廊所帶來的創意設計。以下我們將為你介紹展覽中的一些精彩作品。In December 2013, the US was swept by a deep freeze. More than 32,000 collectors and enthusiasts gathered at the beach in Miami, not only because of the milder weather there, but also to attend Design Miami 2013, one of the biggest design fairs in America. The expo celebrates design culture and commerce with top-notch modern and contemporary art from galleries and art institutions all over the world. We share some of the most notable examples of contemporary art from galleries and art institutions all over the world. We share some of the most notable examples of global contemporary design movement showcased at the fair.

Mangue Groove

by Guilherme Torres for Swarovski Crystal Palace



Mangue Groove 是一個設在日落背景前的水晶燈裝置。設計師希望透過設計，令人們關注巴西瀕危的紅樹林生態。他利用數學幾何結構，連接由無鉛水晶製成的合成管，再加上 LED 燈，締造焦點，並探索自然和科學之間的平衡。

Set against a digital sunset background, Mangue Groove is a light and crystal installation that addresses conservation problems concerning the endangered mangrove ecosystem in Brazil. Adopting a mathematical structure, the installation was formed using synthetic tubes of lead-free crystal linked together by geometric joints and lit with LEDs, creating focal points and exploring the balance between nature and science.



Froissé Mirror

by Mathias Kiss for Armel Soyer

鏡子由破鏡的碎片組裝而成，猶如一張皺巴巴的紙，推翻人們對鏡子必定是採用扁平外形的印象。在光線底下，它產生出銳利的反射，為家居創造出時尚有趣的畫面。

Like a piece of crumpled paper, this faceted Froissé Mirror was created by assembling pieces of broken mirror, overturning the normally predictable, flat shape. When put under light, the mirror casts razor sharp reflections, creating interesting pictures that modernise your home.



Igloo Seat

by Mathias Kiss for Armel Soyer

Igloo 座椅有如一個由九個角形成的巨大浮冰雕塑，其底部由皮革製成，座椅則採用 Mathias Kiss 設計的藍色大理石紋的織物，予人一種優雅的觸感。

The Igloo Seat is a functional sculpture that deploys nine angles like a complex dihedral or a piece of broken ice floe. This unique piece features a leather base and a 'blue portor marble' patterned fabric designed by Mathias Kiss, giving an elegant touch to the room.

